

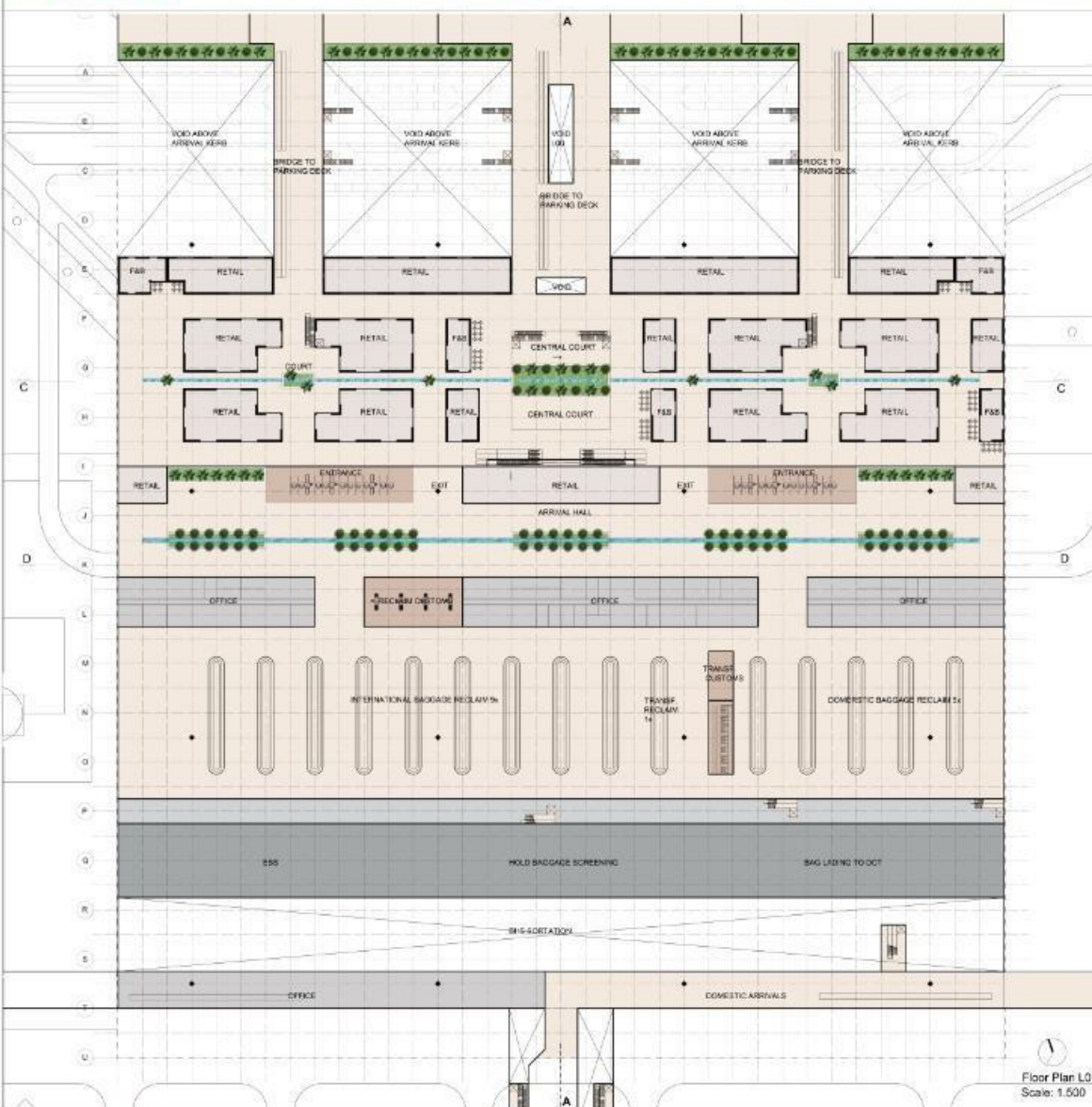
Architectural Design Competition of IranShahr Terminal, IKIA (Imam Khomeini International Airport)

Following jury session on 11/06/2019 and members of the jury decision on 16/06/2019 on the subject of Architectural Design Competition of IranShahr Terminal of IKIA, GMP consulting firm in partnership with Rah Shahr Architectural Consultants was awarded the “First Prize” as the best design.





View From Arrival Hall (L01)



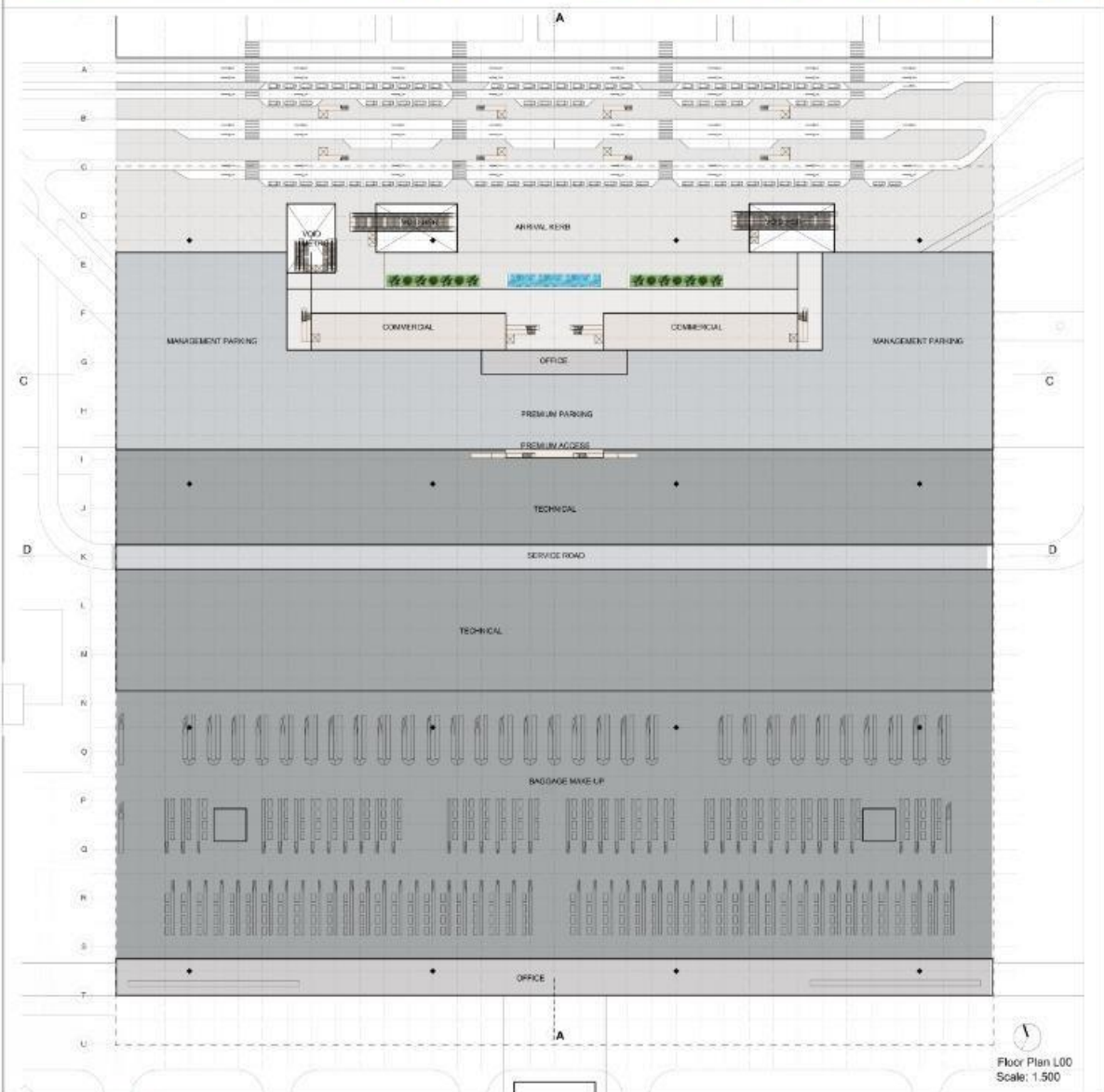
Floor Plan L01
Scale: 1:500



View of Landscape Facade from Arrival Kerb (L00)



View from Parking Bridge (L01)



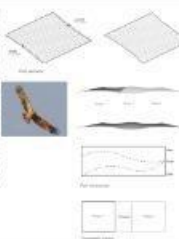
Floor Plan L00
Scale: 1:500



Bird's-eye view Terminal (final phase)

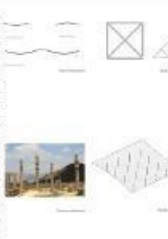
Vision, Inspiration and Concept

The vision for the IranShahr International Terminal is a modern, functional, and aesthetically pleasing structure that serves as a gateway to the city of Shiraz. The design is based on the concept of a 'living terminal' that integrates with the surrounding urban fabric and provides a seamless transition between the airside and landside. The terminal is designed to be a landmark building that reflects the rich cultural heritage of Iran and the region. The concept is inspired by the traditional architecture of the region, particularly the use of brick and the intricate geometric patterns of Islamic art. The terminal is designed to be a multi-functional space that can accommodate a wide range of activities, from check-in and baggage claim to retail and dining. The design is also focused on sustainability and energy efficiency, with a goal of achieving a high level of LEED certification. The terminal is designed to be a gateway to the city of Shiraz, providing a welcoming and memorable experience for all travelers.



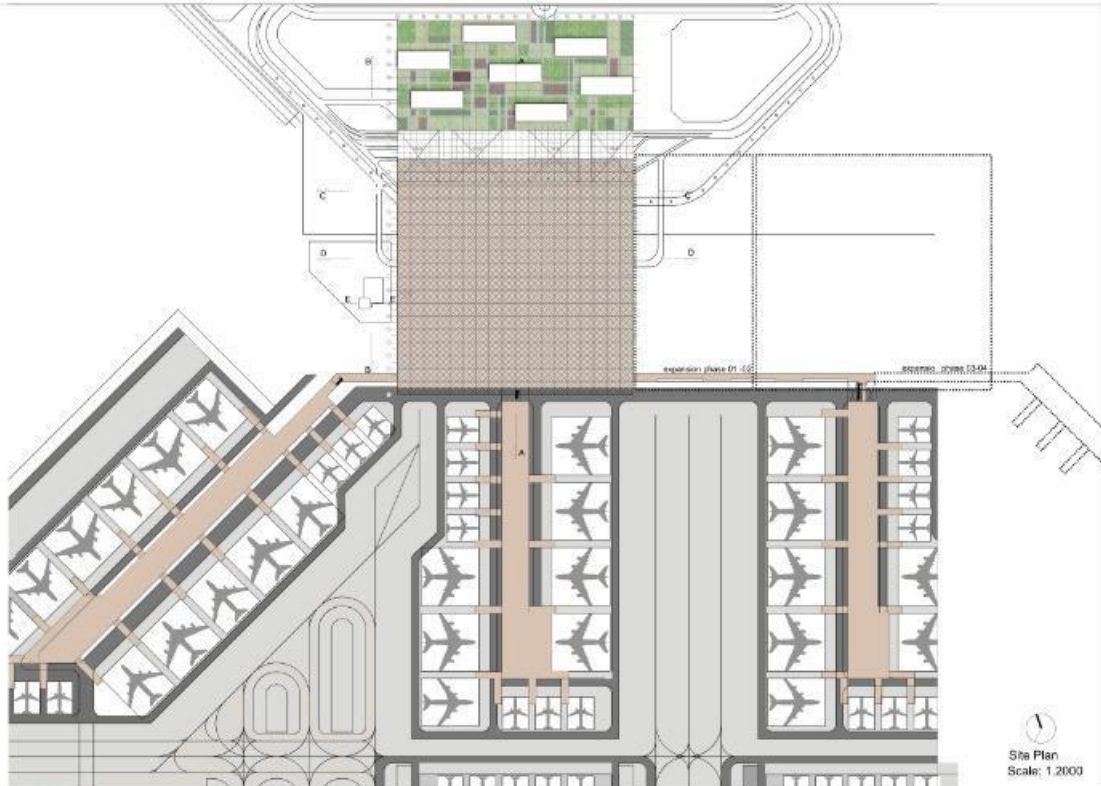
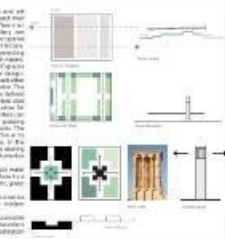
Roof

The roof is a key architectural element which defines the top of the terminal building. It is designed to be a multi-functional space that can accommodate a wide range of activities, from check-in and baggage claim to retail and dining. The roof is designed to be a landmark building that reflects the rich cultural heritage of Iran and the region. The concept is inspired by the traditional architecture of the region, particularly the use of brick and the intricate geometric patterns of Islamic art. The roof is designed to be a multi-functional space that can accommodate a wide range of activities, from check-in and baggage claim to retail and dining. The design is also focused on sustainability and energy efficiency, with a goal of achieving a high level of LEED certification. The roof is designed to be a gateway to the city of Shiraz, providing a welcoming and memorable experience for all travelers.



Internal spaces

The internal spaces are designed to be a multi-functional space that can accommodate a wide range of activities, from check-in and baggage claim to retail and dining. The design is also focused on sustainability and energy efficiency, with a goal of achieving a high level of LEED certification. The internal spaces are designed to be a gateway to the city of Shiraz, providing a welcoming and memorable experience for all travelers.



Site Plan Scale: 1:2000

13 D26L

IranShahr International Terminal



Night bird's-eye view Terminal (Phase 01)



Night bird's-eye view Terminal (Final Phase)



IranShahr Terminal Architectural Vision Competition of IKAC





View from Departure Hall

Usability - operations and logistics

The terminal is designed to be a model of efficiency and a highly efficient way to ensure safety, and to facilitate passenger flow and a convenient check-in process. The design is based on a clear, logical flow of traffic, ensuring that the space is easy to navigate and that the layout is intuitive. The design also takes into account the needs of the airport's operations and the requirements of the airlines. The terminal is designed to be a model of efficiency and a highly efficient way to ensure safety, and to facilitate passenger flow and a convenient check-in process.

Sustainability

The terminal is designed to be a model of sustainability and a highly efficient way to ensure safety, and to facilitate passenger flow and a convenient check-in process. The design is based on a clear, logical flow of traffic, ensuring that the space is easy to navigate and that the layout is intuitive. The design also takes into account the needs of the airport's operations and the requirements of the airlines. The terminal is designed to be a model of efficiency and a highly efficient way to ensure safety, and to facilitate passenger flow and a convenient check-in process.



Materialization

The terminal is designed to be a model of materialization and a highly efficient way to ensure safety, and to facilitate passenger flow and a convenient check-in process. The design is based on a clear, logical flow of traffic, ensuring that the space is easy to navigate and that the layout is intuitive. The design also takes into account the needs of the airport's operations and the requirements of the airlines. The terminal is designed to be a model of efficiency and a highly efficient way to ensure safety, and to facilitate passenger flow and a convenient check-in process.



Special Features

The terminal is designed to be a model of special features and a highly efficient way to ensure safety, and to facilitate passenger flow and a convenient check-in process. The design is based on a clear, logical flow of traffic, ensuring that the space is easy to navigate and that the layout is intuitive. The design also takes into account the needs of the airport's operations and the requirements of the airlines. The terminal is designed to be a model of efficiency and a highly efficient way to ensure safety, and to facilitate passenger flow and a convenient check-in process.



View from Check-in



View from Check-in



Public viewing terrace



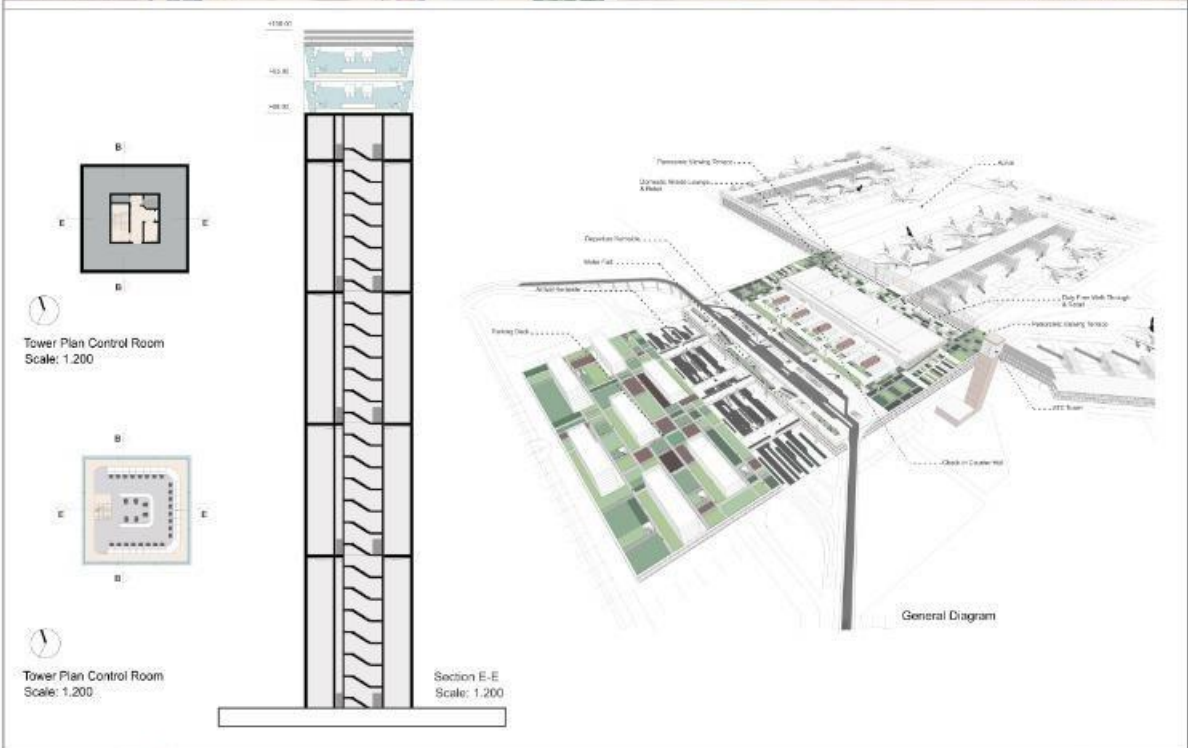
View Roof from Parking Deck(L02)

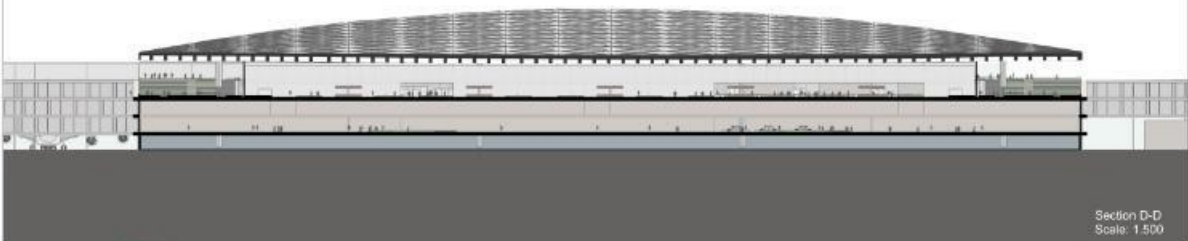


View from Public Terrace Garden (L03)



View from Arrival Retail (L01)

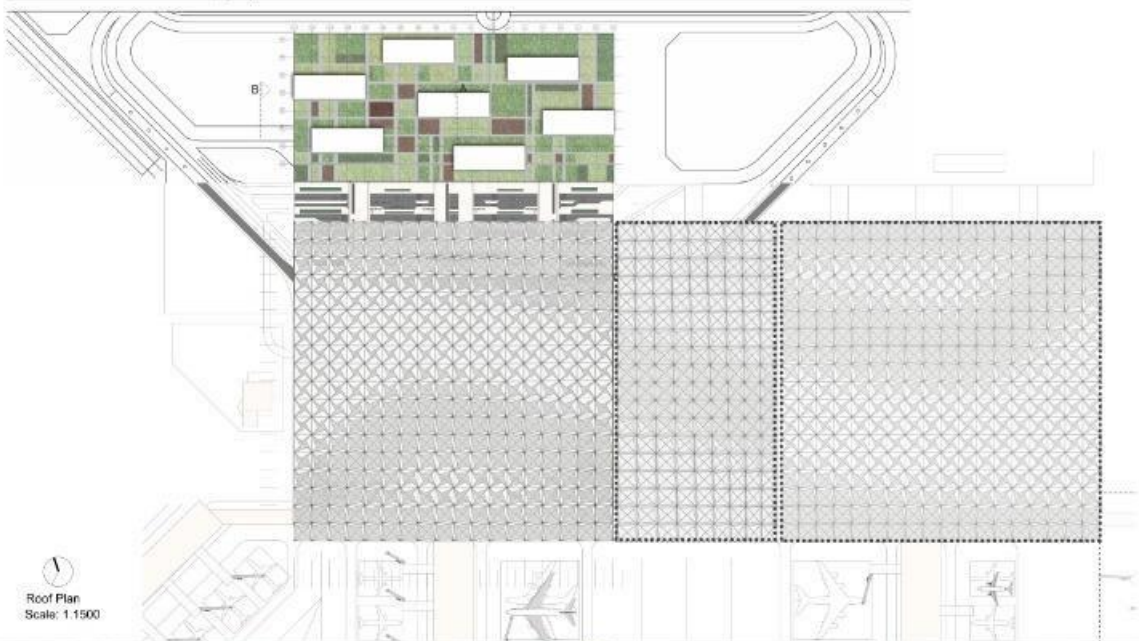


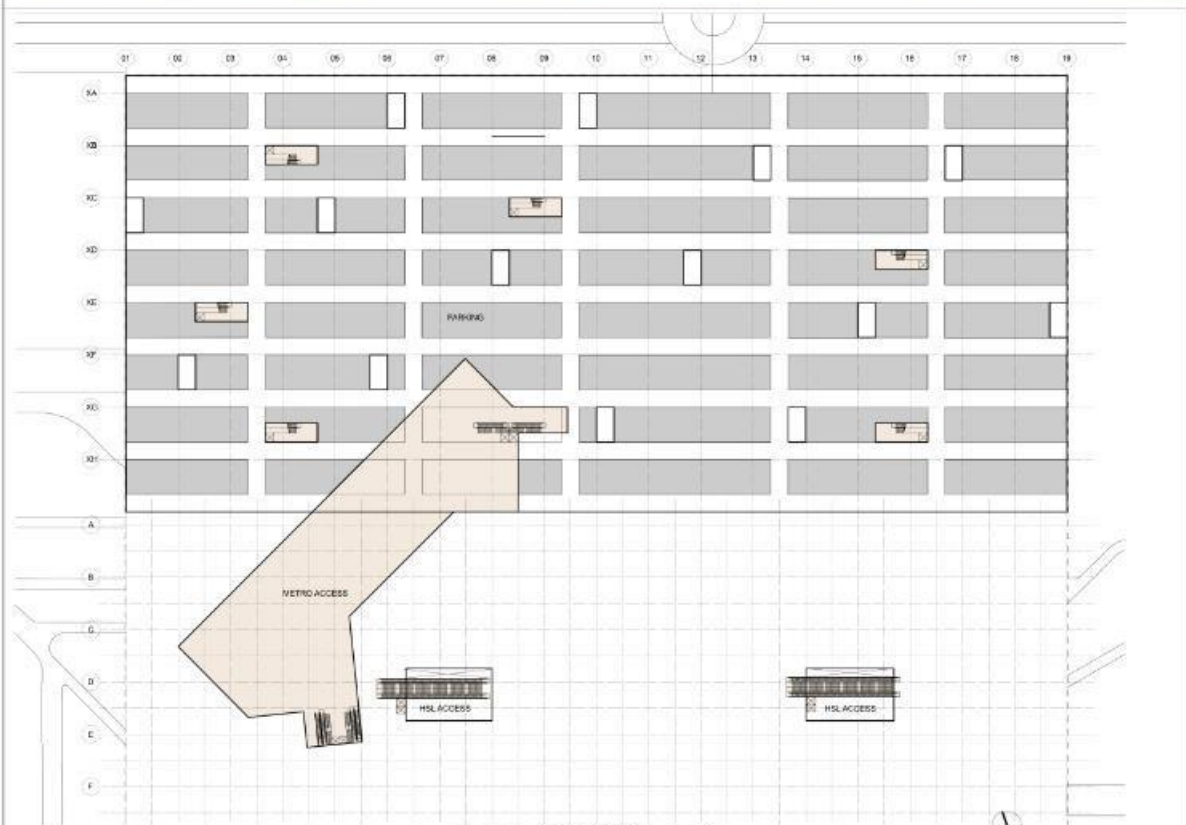


09 D26L

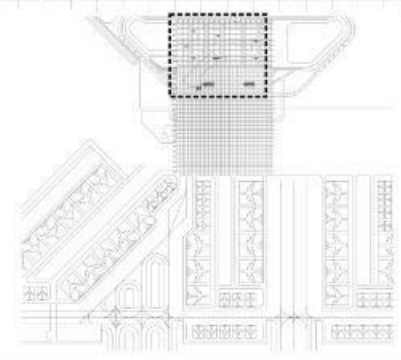
IranShahr International Terminal





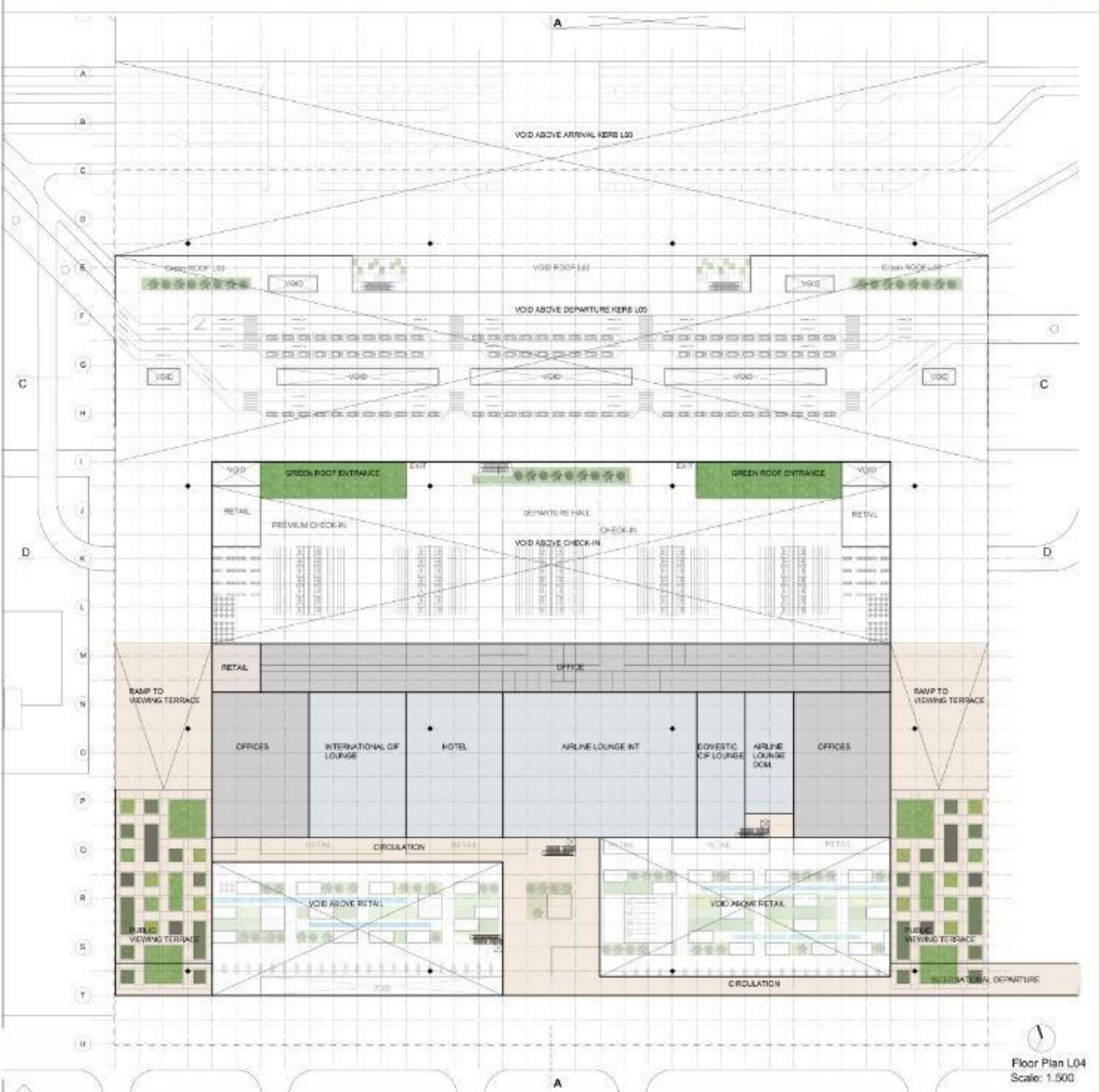


Floor Plan L-01
Scale: 1:500



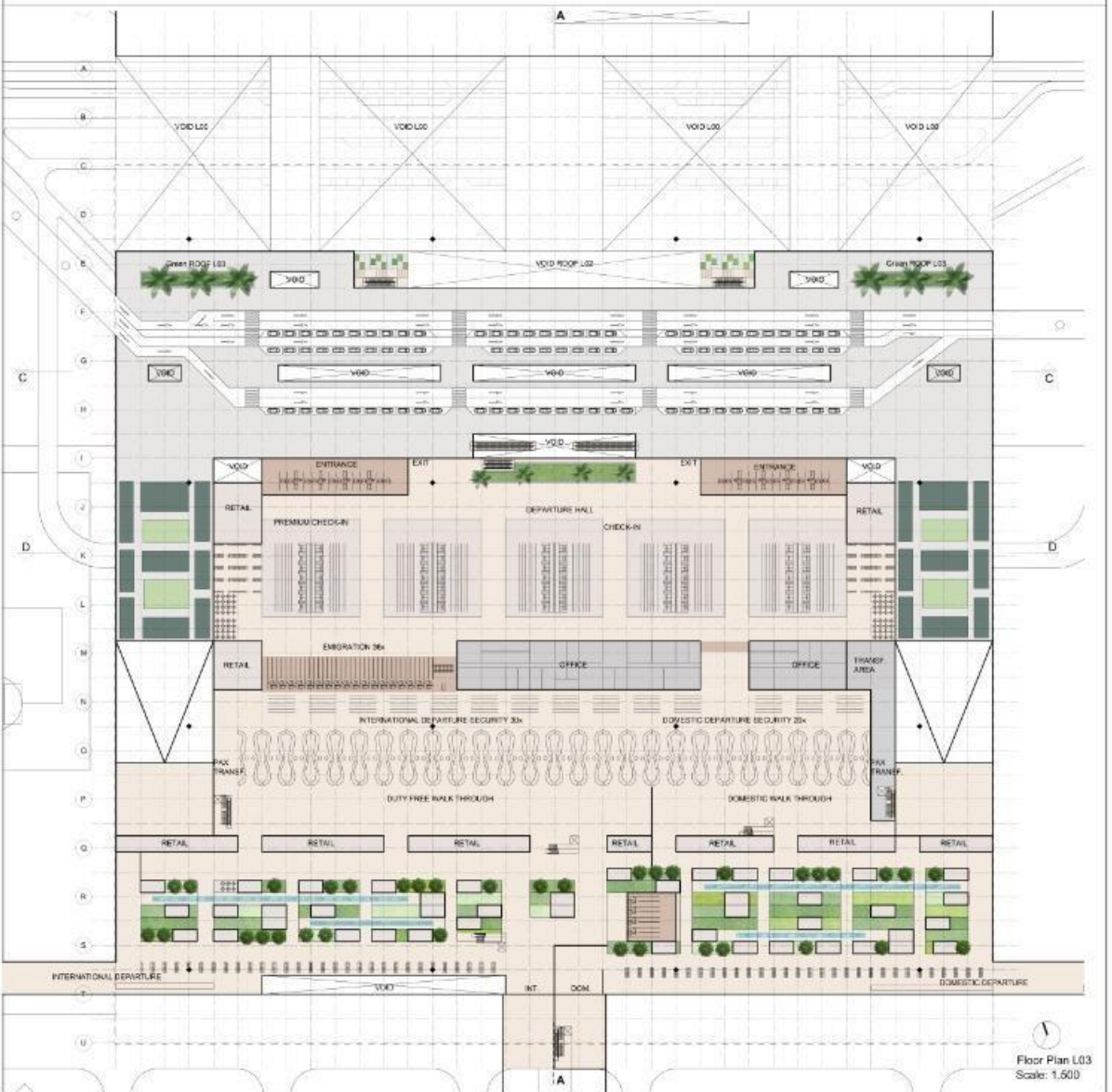


View Departure Lounge from CIP Lounge (L04)





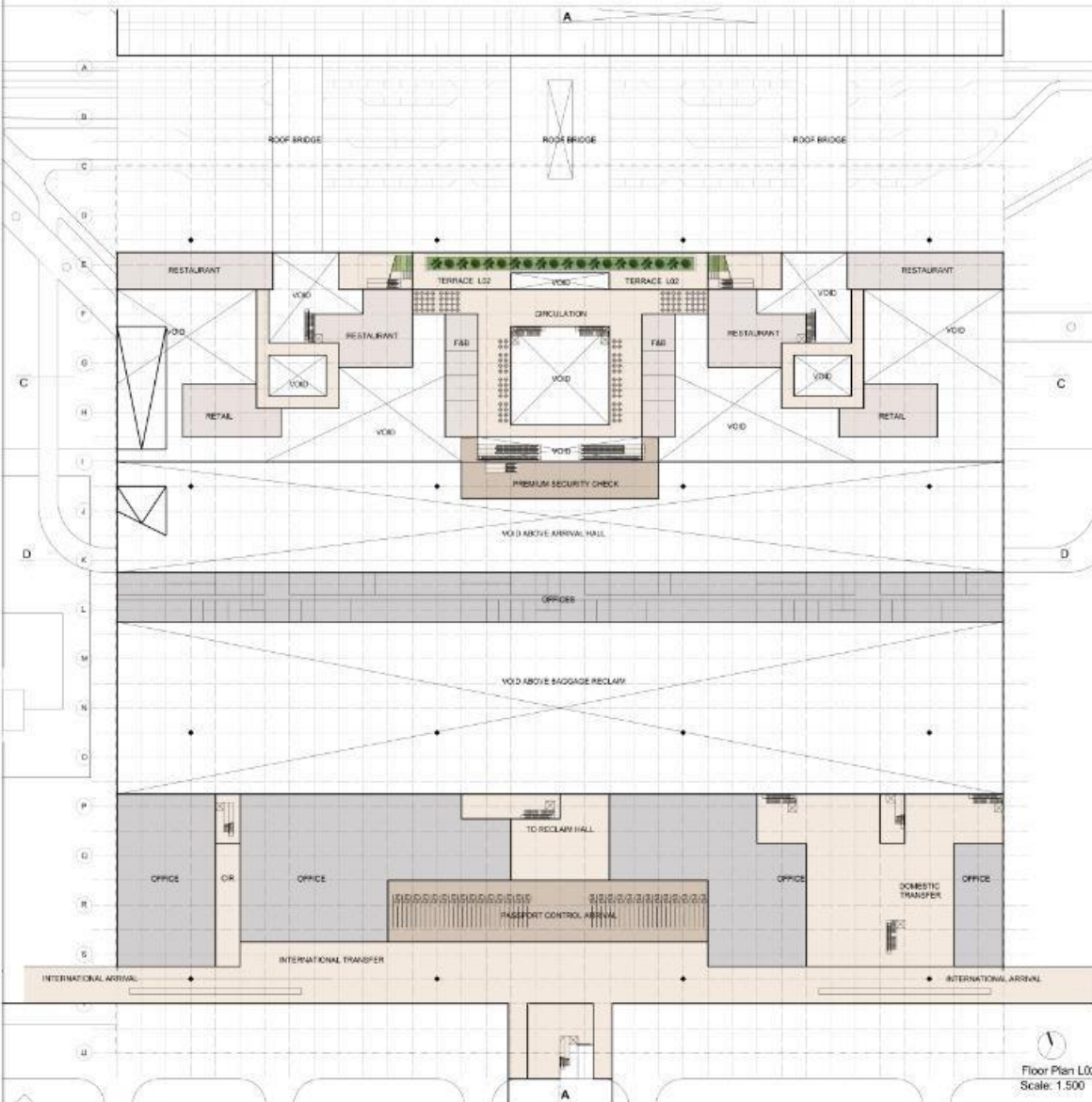
View main entrance from departure kerb(L03)



Floor Plan L03
Scale: 1:500



View landside facade from parking bridge (L01)



Floor Plan L02
Scale: 1:500

